



Union Gap Transit Development Plan 2020 - 2025 and 2019 Annual Report

Union Gap Transit
Operated by Medstar Transportation
1904 Fruitvale Blvd
Yakima, WA 98902
(509) 248-2004

Public Hearing

Adopted by Union Gap City Council

Submitted to WSDOT

Acknowledgements

City of Union Gap

Arlene Fisher, City Manager
Dennis Henne, Public Works Director
Karen Clifton, Finance Director

Prepared by:

Medstar Transportation
1904 Fruitvale Blvd, Yakima, WA 98902

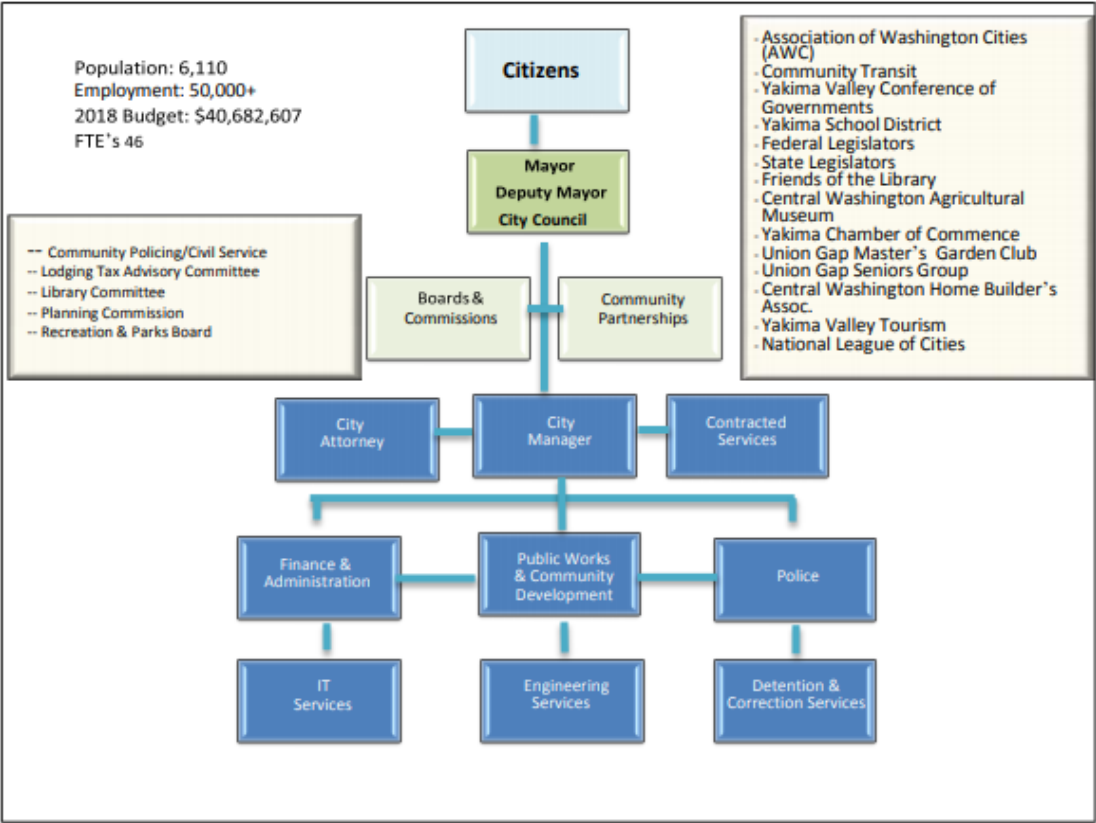
Contact person: Betsy Dunbar
Director of Transportation Success
Email - betsy@gomedstar.com
Phone: (509) 248-2004

Table of Contents

Section 1: Organization	2
Section 2: Service Area	3
Section 3: Physical Plant	4
Section 4: Service Characteristics	4
Section 5: Service Connections	5
Section 6: Service Development & Improvements	5
Section 7: Union Gap Transit Development Plan & WSDOT - Operating & Investment Guidelines:	5
Preservation:	5
Safety:	5
Mobility:	5
Environment:	6
Stewardship:	6
Section 8: Plan Assumptions	6
Section 9: Operating Data 2019 Actual - 2020 – 2025 Estimated	11
Operating Revenues and Expenditures 2019	12
Operating Revenues and Expenditures 2020	12
Operating Revenues and Expenditures 2021	12
Operating Revenues and Expenditures 2022	12
Operating Revenues and Expenditures 2023	12
Operating Revenues and Expenditures 2024	12
(All figures in whole dollars)	
Operating Revenues and Expenditures 2025	12
Section 10: List of Equipment	13
Section 11: Route Map and Schedules	14
Section 12: Dial A Ride Rules and Information	17

Section 1: Organization

Union Gap Transit is governed by the Union Gap City Council. Their 7 member board approves changes to transit operations and service levels.



City council meetings are usually held on the second and fourth Monday of each month at the Union Gap Civic Hall located at 102 W Ahtanum Rd. Additionally, the Transit Advisory Committee meets as needed to discuss any suggestions or ideas for transit development and changes.

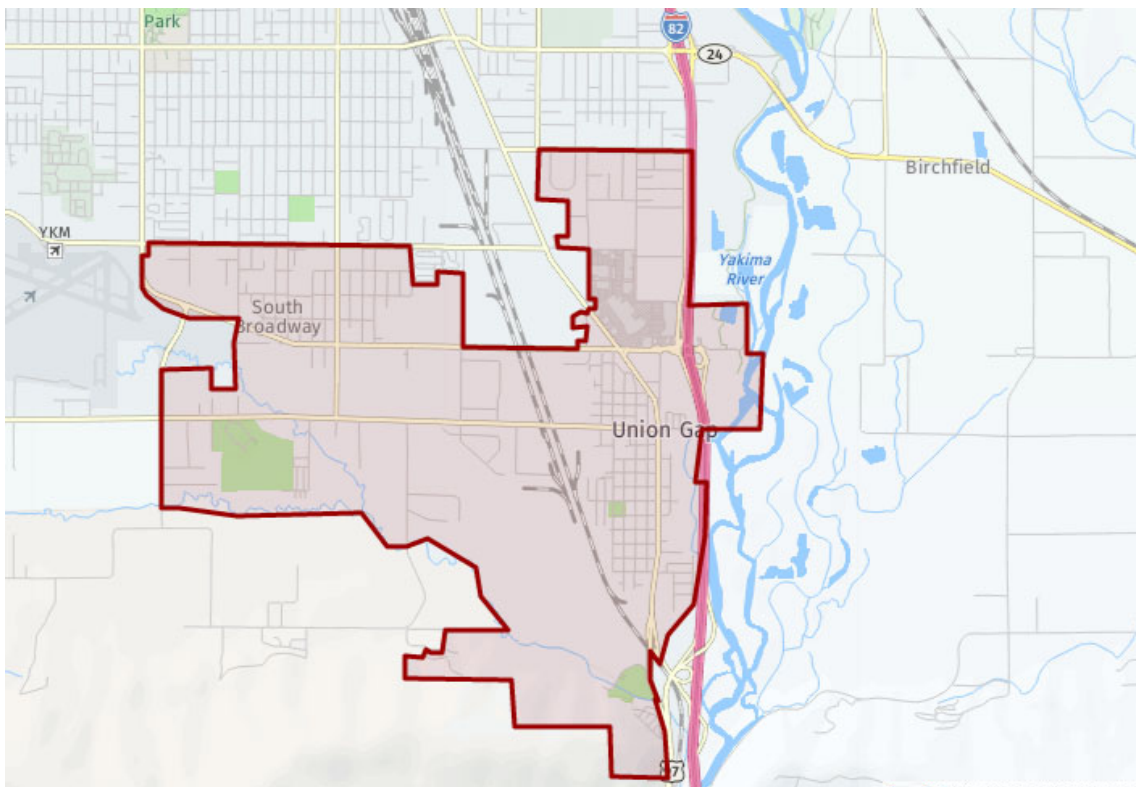


As of 08/01/2019 Union Gap Transit contractor employed:

- 3 full time employees in the operations division
- 9 full time equivalents in the Dial-A-Ride Paratransit division
- 1 full time equivalent in the maintenance division
- 1 full time equivalent in the administration division
- .98 full time equivalent employed by The City of Union Gap transit division
- 14.98 Total Transit employees

Section 2: Union Gap Transit Service Area

Union Gap Transit is a municipal transit system as authorized in RCW 35.58.2795 and is located in Yakima County.



Section 3: Physical Plant

The contractor's facility is located at 1904 Fruitvale Blvd., Yakima, WA 98902. The building is owned by their contracted services provider Medstar Transportation.



Section 4: Service Characteristics

Union Gap Transit contracts transit services both fixed route and ADA paratransit services to Medstar Transportation.

In 2008 the Union Gap Transit Division was created and fully funded through a .02% sales tax. This funding supports free passenger fares for both fixed route and paratransit services. This division's purpose is to administer the Union Gap Transit contract and provide essential management and support services to the division through oversight, coordination and technical assistance.

Union Gap Transit provides fixed route and ADA paratransit services. Union Gap Transit operates 3 fixed route buses with the 3rd route bus going in a reverse direction Monday-Friday and 2 buses on the weekends. Bus service operates Monday through Friday 6:00 a.m. – 7:00 p.m., and Saturday and Sunday 9:00 a.m. – 7:00 p.m. The Monday through Friday bus service operates on half-hour headways with the reverse route operating on a one-hour frequency. Saturday and Sunday bus service operates on a one-hour frequency. Dial-A-Ride paratransit service operates the same service hours as fixed route service. Additionally, Dial-A-Ride Paratransit service also operates Sunday 8:00 a.m. – 1:00 p.m. For further details on local fixed route service as well as shuttle services, please visit the Union Gap Transit website at <https://uniongapwa.gov/transit> or see the back section of the Yakima Transit Bus book. Union Gap Transit currently offers free service (no boarding fee) to all transit riders and complementary paratransit rides for all qualified riders.

Due to the fact that all vehicles used in the provision of transit services are purchased and owned by the contractor and not the City of Union Gap, there is no listing for capital expenditures for vehicles in this plan. When vehicles are listed as additions to or replacement of vehicles used for transit purposes, it is for fleet description only as no capital funds are used at this time.

Section 5: Service Connections

Union Gap Transit provides fixed route service to the Sears passenger shelter on Valley Mall Blvd and Main St for connections with Yakima Transit routes 7 and 9 as well as connections with Selah Transit. The Pahto Public Passage bus routes 1, 4 and 6 connect at the Sears Bus Stop M-F at 10:45 a.m., 2:30 pm and again at 5:10 p.m. These connector routes meet up with the CWA Airporter Shuttle for trips to Seattle, the Ellensburg Commuter and the Community Connector for trips throughout the Yakima Valley as well as connections to Ben Franklin Transit in the Tri Cities.

Union Gap Transit offers Dial-A-Ride services within the city limits of Union Gap, and to and from the city limits of Yakima and Selah.

Section 6: Service Development & Improvements

1. Work together with the City of Union Gap and local businesses to promote the service and local business.
2. Provide shuttle service to residents and the public for special events such as the State Fair, 4th of July and other events when requested.
3. Develop innovative ways to streamline operations and efficiencies.
4. Continue striving for excellence in support of our core values to provide great customer service as well as safe reliable transportation.
5. Work with local businesses to help promote and support commerce.

Section 7: Union Gap Transit Development Plan & WSDOT - Operating & Investment Guidelines:

Preservation:

In 2019, Union Gap Transit will continue to use its resources to maintain service levels in all modes of Transportation while meeting all the requirements of the ADA. In the next 6 years, Union Gap Transit will maintain or increase levels of service, replace most of the older revenue service vehicles and try to add more alternative fuel or hybrid vehicles.

Safety:

The continued modernization of the vehicle fleets including fleet software will improve system safety by enlisting the latest safety related technology and maintenance systems. The installation of more bus shelters will improve system safety by providing a waiting area that is both well lit and away from traffic.

Mobility:

In completing this Six Year Transit Development Plan, Union Gap Transit will continue with a totally accessible fixed route bus fleet, while increasing service levels in paratransit services for those with disabilities who are unable to use the fixed route services.

Environment:

In the near future, we hope to have converted all transit vehicles to hybrid or alternative fuel technology to enhance a healthy community, promote energy conservation and protect our environment.

Stewardship:

It is the intent of Union Gap Transit, to work towards greater efficiency and to improve the quality of our on demand transportation services with efficient routes and studies for a future investment in micro transit services for local and outlying businesses. This could include an on demand rider App which would allow riders to easily view the ETA of each vehicle in real time.

Section 8: Plan Assumptions

Population – According to the 2017 US Census, the population of the Union Gap is 6,152.

1. **Sales Tax** - We are expecting sales tax to remain constant through 2025.
2. **Inflation Factor** - Per historical, CPI for Medstar operating expenses will increase at a rate of 1.5% as outlined in the plan through 2025.
3. **Fixed Route Bus Service** In 2019 Union Gap Transit will provide 14,512 hours of revenue service. Ridership will be consistent through 2025.



Figure 1: Monthly Ridership. This graph depicts the month ridership totals since the implementation of services by Medstar Transportation in 2014.

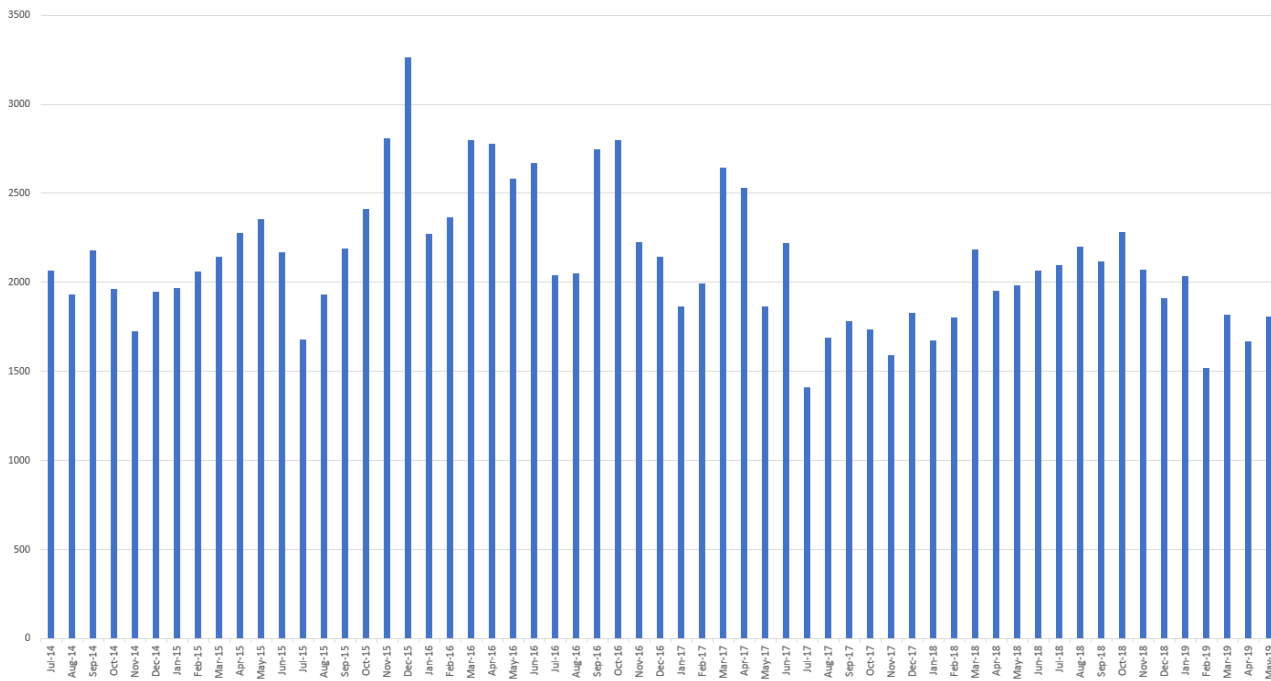


Figure 2: Monthly Ridership. This graph depicts the monthly ridership totals by Route between June 2018 through May 2019.

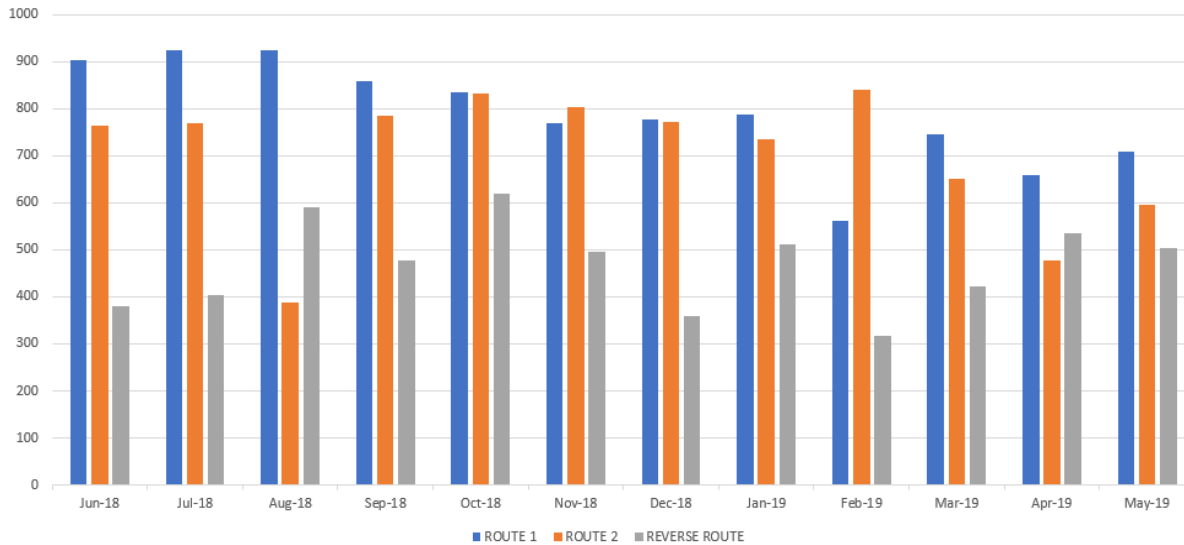


Figure 3: Union Gap Route Daily Average by Month. This graph depicts boardings/exits per day by month between June 2018 through May 2019. Example: The month of October averages 74 boardings/exits a day.

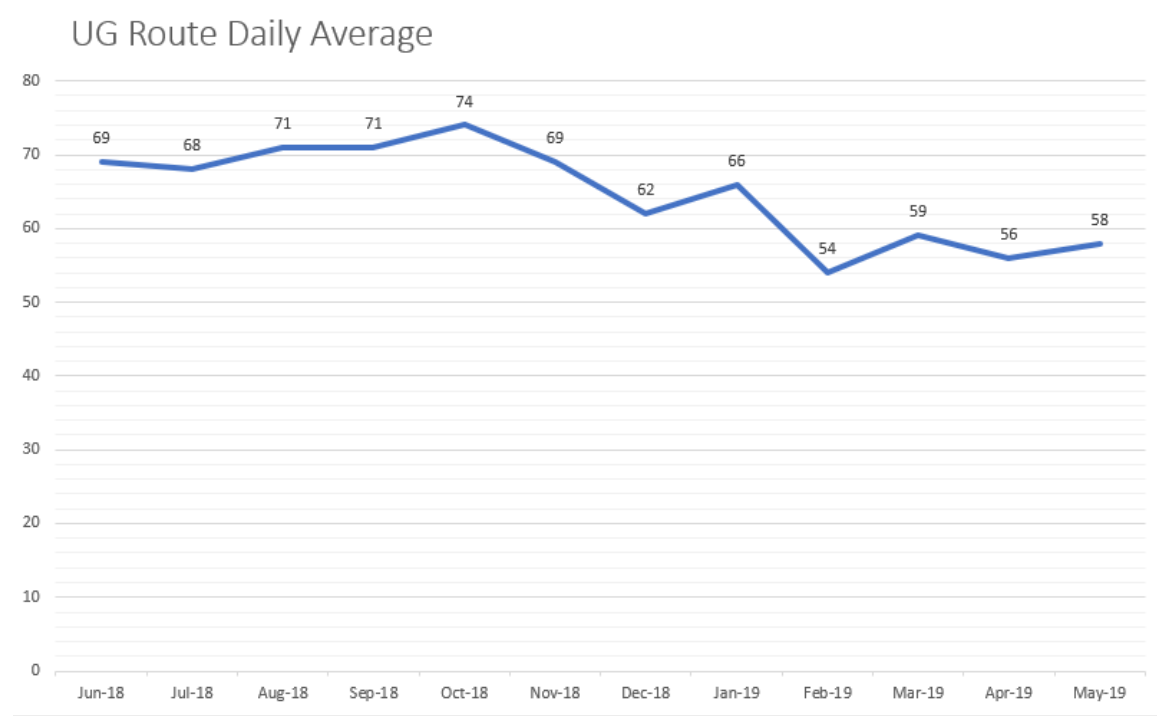


Figure 4: Union Gap Route Daily Average by Month by Route.

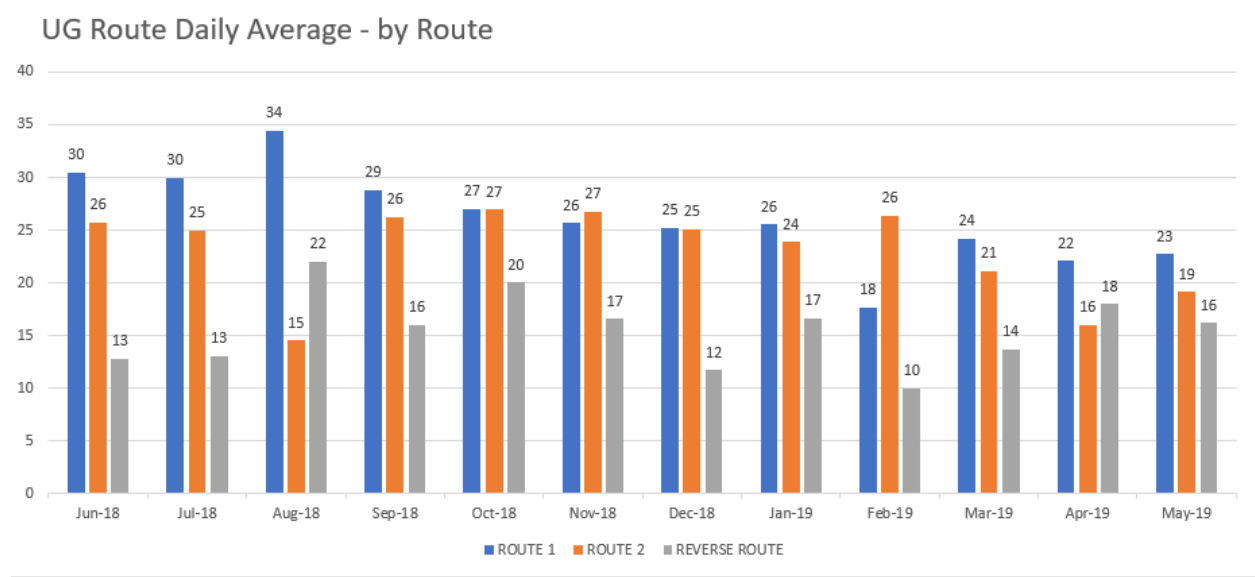
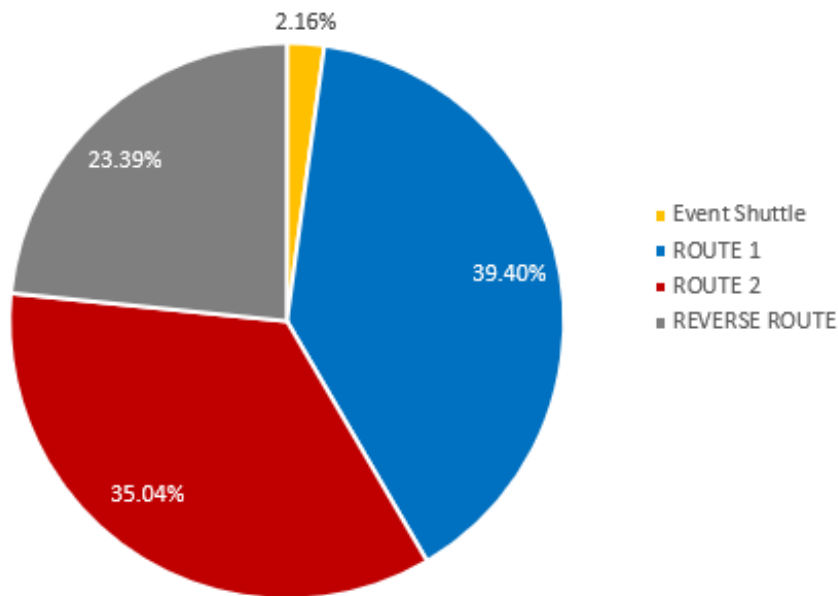


Figure 5: Ridership Data Sampling. This graph shows ridership data from June 2018 to May 2019.



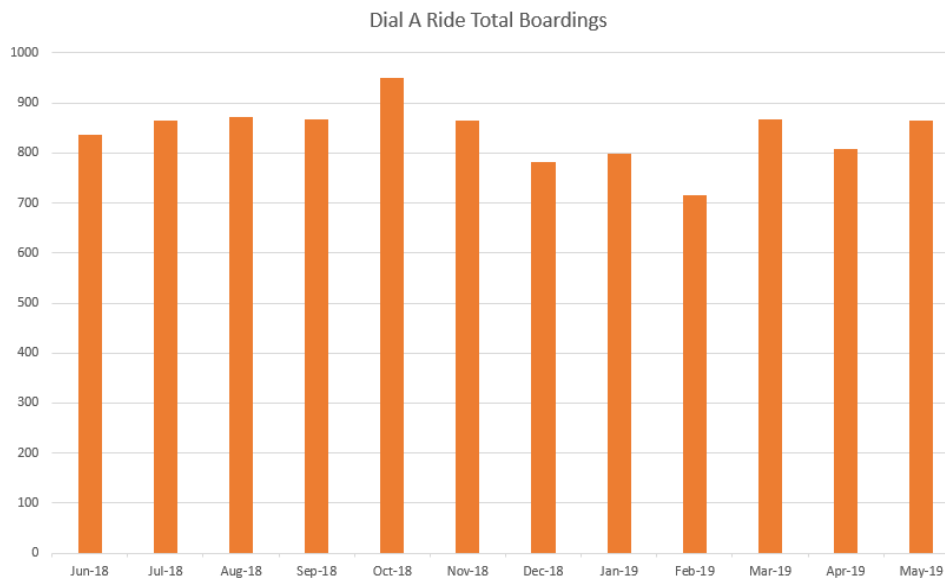
4. Dial-A-Ride ADA Paratransit Service

Union Gap Transit provided 7,344 revenue hours of service in 2018, and forecast it will increase at a rate of 1% each year through 2025.



Figure 4: Dial A Ride Ridership.

This graph shows the total boardings from June 2018 to May 2019.



In future years Dial-A-Ride services may increase due to an increase in the aging population. In order to adhere to ADA Americans with Disabilities Act standards and requirements for those with disabilities, it may be necessary to consider securing additional revenue to be used exclusively for Dial-A-Ride growth and service quality maintenance. Mobility Management may be used to direct riders who are able to the fixed route system.

5. **Transit Buses** – The Union Gap Fleet consists of 6 Transit Buses in compliance with ADA Wheelchair Lifts.
6. **Paratransit Vehicles** – The Dial a Ride Fleet consists of 2 wheelchair accessible Grand Caravans.
7. **Contract Administration, Operations, Shop and Administration Facility** - Our call center is open 24 hours with administrative support for 24/7, as well as full time onsite mechanics on duty to ensure seamless service.
8. **Bus Shelters** - In coordination with its contractor the City will determine appropriate locations along its arterials for fixed bus stops. Fixed bus stops will increase safety along these corridors for both transit riders and motorists. Bus shelters and benches are installed and maintained by the City.
9. **Flag Stops** - Flag stops are a great way to increase ridership along with the many bus shelters and benches along the route. With safety in mind, flag stops on major arterials like Main Street and Washington Avenue are permitted when it is safe to pull off the road. For all other flag stops, the driver must be able to give sufficient notice to the vehicles behind the bus before stopping.
10. **Fares** - There is no cost to ride Dial A Ride or the Union Gap Transit bus routes.

Section 9: Operating Data 2019 Actual - 2020 – 2025 Estimated

Fixed Route Service	2019	2020	2021	2022	2023	2024	2025
Revenue vehicle miles	160,215	160,215	160,215	160,215	160,215	160,215	160,215
Total vehicle miles	180,017	180,017	180,017	180,017	180,017	180,017	180,017
Revenue vehicle hours	14,512	14,512	14,512	14,512	14,512	14,512	14,512
Total vehicle hours	15,237	15,237	15,237	15,237	15,237	15,237	15,237
Passenger trips	23,452	23,686	23,923	24,162	24,404	24,648	24,895
Fatalities	0	0	0	0	0	0	0
Reportable injuries	0	0	0	0	0	0	0
Collisions	0	0	0	0	0	0	0
Gasoline fuel Consumed (gal)	23,588	23,588	23,588	23,588	23,588	23,588	23,588
Dial-A-Ride Service							
Revenue vehicle miles	63,520	64,156	64,797	65,445	66,100	66,761	67,428
Total vehicle miles	71,371	72,085	72,806	73,534	74,269	75,012	75,762
Revenue vehicle hours	7,344	7,418	7,492	7,567	7,643	7,719	7,796
Total vehicle hours	8,346	8,429	8,514	8,599	8,685	8,772	8,859
Passenger trips	8,518	8,603	8,689	8,776	8,864	8,953	9,042
Fatalities	0	0	0	0	0	0	0
Reportable injuries	0	0	0	0	0	0	0
Collisions	0	0	0	0	0	0	0
Gasoline fuel Consumed (gal)	4,153	4,194	4,236	4,278	4,321	4,364	4,408

Union Gap Transit - Operating Revenues and Expenditures 2019-2025

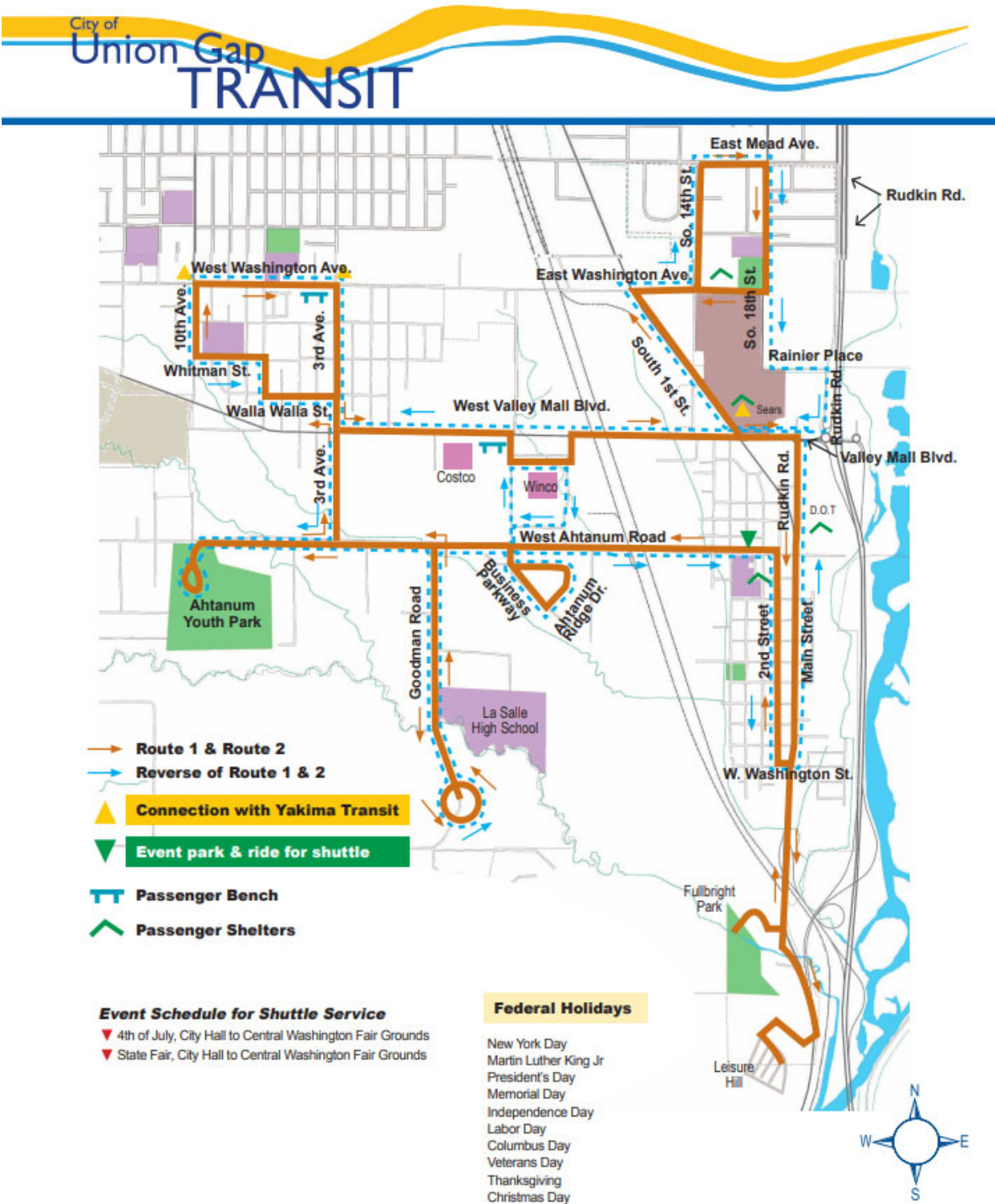
All figures in whole dollars

Year	2019	2020	2021	2022	2023	2024	2025
Beginning Balance	3,192,911	3,384,398	3,515,582	3,606,323	3,681,697	3,741,481	3,785,447
Revenues							
Sales Tax	1,252,784	1,252,784	1,252,784	1,252,784	1,252,784	1,252,784	1,252,784
Fares Box							
Interest	45,374						
Federal Operating Grants							
State Operating Grants							
Interfund Loan Proceeds	25,296	25,296					
Total Available	4,516,365	4,662,478	4,768,366	4,859,107	4,934,481	4,994,265	5,038,231
Operating Expenses							
Contracted Fixed Route	712,321	723,006	733,851	744,859	756,032	767,372	778,883
Contracted Paratransit ADA	179,539	182,232	184,965	187,740	190,556	193,414	196,315
Contracted Shuttle Service	12,500	12,688	12,878	13,071	13,267	13,466	13,668
City Operating Expenses	136,407	137,771	139,149	140,540	141,946	143,365	144,799
Total Expenses	1,040,767	1,055,696	1,070,843	1,086,210	1,101,800	1,117,618	1,133,665
Net Cash Available	3,475,598	3,606,782	3,697,523	3,772,897	3,832,681	3,876,647	3,904,566
Capital Obligations							
Capital Improvements	46,200	46,200	46,200	46,200	46,200	46,200	46,200
Interfund Transfers	45,000	45,000	45,000	45,000	45,000	45,000	45,000
Total Capital Expenditures	91,200	91,200	91,200	91,200	91,200	91,200	91,200
Ending Cash Balance 12/31	3,384,398	3,515,582	3,606,323	3,681,697	3,741,481	3,785,447	3,813,366

Section 10: List of Equipment

Year	Make	Model	VIN #	Seats	Lift/Ramp	Vehicle #
2016	Dodge	Caravan	2C4RDGBG0GR396557	3	YES	67
2012	Dodge	Caravan	2D4CN1AE1AR334613	3	YES	44
2006	Ford	E-450	1FDXE45S13HA54135	12	YES	114
2008	Ford	E-450	1FD4E45S18DA78064	14	YES	103
2006	Ford	E-450	1FDXE45S76HA69713	14	YES	104
2009	Ford	E-450	1FD4E45S99DA39376	13	YES	108
2010	Ford	E-450	1FD4E45S6ADA05947	10	YES	109
2001	Ford	E-450	1FDXE45S91HA12454	14	YES	110

Section 11: Route Map and Schedules





Route 1 - **Monday-Friday** | Ruta 1- lunes-viernes

	Sear Store	14th & Mead	18th & Carey	D.O.T.	Fullbright Park	Leisure Hill	2nd St. & Washington	Business Park	Youth Park	10th Ave. & Washington	3rd Ave. & Washington	Costco	Winco
AM	6:30	6:34	6:36	6:40	6:47	6:51	6:55	7:01	7:06	7:12	7:14	7:18	7:20
	7:00	7:04	7:06	7:10	7:17	7:21	7:25	7:31	7:36	7:42	7:44	7:48	7:50
	7:35	7:39	7:41	7:45	7:52	7:56	8:00	8:06	8:11	8:17	8:19	8:23	8:25
	8:05	8:09	8:11	8:15	8:22	8:26	8:30	8:36	8:41	8:47	8:49	8:53	8:55
	8:40	8:44	8:46	8:50	8:57	9:01	9:05	9:11	9:16	9:22	9:24	9:28	9:30
	9:10	9:14	9:16	9:20	9:27	9:31	9:35	9:41	9:46	9:52	9:54	9:58	10:00
	9:45	9:49	9:51	9:55	10:02	10:06	10:10	10:16	10:21	10:27	10:29	10:33	10:35
	10:15	10:19	10:21	10:25	10:32	10:36	10:40	10:46	10:51	10:57	10:59	11:03	11:05
	10:50	10:54	10:56	11:00	11:07	11:11	11:15	11:21	11:26	11:32	11:34	11:38	11:40
	11:20	11:24	11:26	11:30	11:37	11:41	11:45	11:51	11:56	12:02	12:04	12:08	12:10
PM	12:30	12:34	12:36	12:40	12:47	12:51	12:55	1:01	1:06	1:12	1:14	1:18	1:20
	1:00	1:04	1:06	1:10	1:17	1:21	1:25	1:31	1:36	1:42	1:44	1:48	1:50
	1:35	1:39	1:41	1:45	1:52	1:56	2:00	2:06	2:11	2:17	2:19	2:23	2:25
	2:05	2:09	2:11	2:15	2:22	2:26	2:30	2:36	2:41	2:47	2:49	2:53	2:55
	2:40	2:44	2:46	2:50	2:57	3:01	3:05	3:11	3:16	3:22	3:24	3:28	3:30
	3:10	3:14	3:16	3:20	3:27	3:31	3:35	3:41	3:46	3:52	3:54	3:58	4:00
	3:45	3:49	3:51	3:55	4:02	4:06	4:10	4:16	4:21	4:27	4:29	4:33	4:35
	4:15	4:19	4:21	4:25	4:32	4:36	4:40	4:46	4:51	4:57	4:59	5:03	5:05
	4:50	4:54	4:56	5:00	5:07	5:11	5:15	5:21	5:26	5:32	5:34	5:38	5:40
	5:20	5:24	5:26	5:30	5:37	5:41	5:45	5:51	5:56	6:02	6:04	6:08	6:10
	5:55	5:59	6:01	6:05	6:12	6:16	6:20	6:26	6:31	6:37	6:39	6:43	6:45
	6:25	6:29	6:31	6:35	6:42	6:46	6:50	6:56	7:01	7:07	7:09	7:13	7:15

Federal Holiday service in Blue.

Route 1 - **Saturday & Sunday** | Ruta 1- Sábado y Domingo

	Sear Store	14th & Mead	18th & Carey	D.O.T.	Fullbright Park	Leisure Hill	2nd St. & Washington	Business Park	Youth Park	10th Ave. & Washington	3rd Ave. & Washington	Costco	Winco
AM	8:40	8:44	8:46	8:50	8:57	9:01	9:05	9:11	9:16	9:22	9:24	9:28	9:30
	9:10	9:14	9:16	9:20	9:27	9:31	9:35	9:41	9:46	9:52	9:54	9:58	10:00
	9:45	9:49	9:51	9:55	10:02	10:06	10:10	10:16	10:21	10:27	10:29	10:33	10:35
	10:15	10:19	10:21	10:25	10:32	10:36	10:40	10:46	10:51	10:57	10:59	11:03	11:05
	10:50	10:54	10:56	11:00	11:07	11:11	11:15	11:21	11:26	11:32	11:34	11:38	11:40
	11:20	11:24	11:26	11:30	11:37	11:41	11:45	11:51	11:56	12:02	12:04	12:08	12:10
	12:30	12:34	12:36	12:40	12:47	12:51	12:55	1:01	1:06	1:12	1:14	1:18	1:20
PM	1:00	1:04	1:06	1:10	1:17	1:21	1:25	1:31	1:36	1:42	1:44	1:48	1:50
	1:35	1:39	1:41	1:45	1:52	1:56	2:00	2:06	2:11	2:17	2:19	2:23	2:25
	2:05	2:09	2:11	2:15	2:22	2:26	2:30	2:36	2:41	2:47	2:49	2:53	2:55
	2:40	2:44	2:46	2:50	2:57	3:01	3:05	3:11	3:16	3:22	3:24	3:28	3:30
	3:10	3:14	3:16	3:20	3:27	3:31	3:35	3:41	3:46	3:52	3:54	3:58	4:00
	3:45	3:49	3:51	3:55	4:02	4:06	4:10	4:16	4:21	4:27	4:29	4:33	4:35
	4:15	4:19	4:21	4:25	4:32	4:36	4:40	4:46	4:51	4:57	4:59	5:03	5:05
	4:50	4:54	4:56	5:00	5:07	5:11	5:15	5:21	5:26	5:32	5:34	5:38	5:40
	5:20	5:24	5:26	5:30	5:37	5:41	5:45	5:51	5:56	6:02	6:04	6:08	6:10
	5:55	5:59	6:01	6:05	6:12	6:16	6:20	6:26	6:31	6:37	6:39	6:43	6:45

Federal Holiday service in Blue.

Reverse Route - **Monday-Friday** | Ruta Inversa - lunes-viernes

	Sear Store	14th & Mead	18th & Carey	3rd Ave. & Washington	10th Ave. & Washington	Youth Park	Business Park	Winco	2nd St. & Washington	D.O.T.
AM	6:45	6:49	6:51	7:03	7:07	7:13	7:18	7:23	7:30	7:35
	7:47	7:51	7:53	8:05	8:09	8:15	8:20	8:25	8:32	8:37
	8:49	8:53	8:55	9:07	9:11	9:17	9:22	9:27	9:34	9:39
	9:51	9:55	9:57	10:09	10:13	10:19	10:24	10:29	10:36	10:41
	10:53	10:57	10:59	11:11	11:15	11:21	11:26	11:31	11:38	11:43
	11:55	11:59	12:01	12:13	12:17	12:23	12:28	12:33	12:40	12:45
PM	1:30	1:34	1:36	1:48	1:52	1:58	2:03	2:08	2:15	2:20
	2:32	2:36	2:38	2:50	2:54	3:00	3:05	3:10	3:17	3:22
	3:34	3:38	3:40	3:52	3:56	4:02	4:07	4:12	4:19	4:24
	4:36	4:40	4:42	4:54	4:58	5:04	5:09	5:14	5:21	5:26
	5:38	5:42	5:44	5:56	6:00	6:06	6:11	6:16	6:23	6:28
	6:40	6:44	6:46	6:58	7:02	7:08	7:13	7:18	7:25	7:30

Federal Holiday service in Blue.

Section 12: Dial A Ride Rules and Information



TELEPHONE INFORMATION HOURS:

Monday–Friday 7 AM – 6 PM
Saturday 8 AM – 6 PM
Sunday 8 AM – 4 PM

ACCESSIBILITY- All transit buses are wheelchair accessible. All of Union Gap Transit's buses are lift-equipped to accommodate our passengers using mobility devices such as wheelchairs.

BUS STOPS- See map or call 574-8000 for assistance.

LOST AND FOUND- Lost items are held for 30 days.

BICYCLES

Our transit buses are equipped with bike racks.

Union Gap Transit assumes no liability for damage or theft when using bike racks. Use the bike racks at your own risk and monitor your bike when it is on the racks. Please follow the bike rack instructions when loading/unloading.

LOADING YOUR BIKE

1. Pull up to release arm & allow it to drop down slowly.
2. Lift bike onto rack putting bike in the inside slot first.
3. Raise support arm over top of front tire & release to fit over tire making sure support arm is resting on tire not metal.

UNLOADING YOUR BIKE- (inform driver you need to unload bike)

1. Raise arm off the tire & allow it to drop down slowly.
2. Lift bike out of rack.
3. If there is no other bike in the rack, fold the rack up by raising it to the upright position.

RIDING GUIDELINES-

- Shirts and shoes are required
- State law prohibits smoking on the bus
- Take seat quickly & stay seated while the bus is moving
- State law requires the use of seat belts
- No eating, drinking or listening to music w/out headphones
- Keep feet and carry-on items including strollers out of the aisles
- Non service animals must be in cages
- Children under 6 must be with an adult or older child
- No profanity or rude behavior allowed on the bus
- Bikes must be in bike racks. No rollerblades
- The first few seats are reserved for the elderly and riders with special mobility needs. Please give up those seats when requested.
- Please let the driver know ahead of time if you want to get off the bus, and after exiting, wait for the bus to leave before crossing the street.
- Flag stops will only occur when the driver feels it is safe to do so.

UNION GAP DIAL-A-RIDE-

This program is a great way for Union Gap residents with mental or physical disabilities, temporary injury or illness to travel when needed within the cities and Union Gap, Selah, and Yakima. In order to become eligible to ride Dial-A-Ride each applicant must complete & submit an application which includes a medical evaluation of their disability, temporary injury or illness. For an application call 574-8000.

INFORMACIÓN TELEFÓNICA :

Lunes a Viernes: 7 AM - 6 PM
Sábado: 8 AM - 6 PM
Domingo: 8 AM - 4 PM

SERVICIOS ACCESIBLES - Todos los autobuses de tránsito son accesibles para minusválidos. Todos los autobuses de tránsito de Union Gap son equipados con elevadores para dar cabida a nuestros pasajeros que utilizan dispositivos de movilidad como sillas de ruedas.

BUS STOPS- Ver mapa o llame al 574-8000 para obtener ayuda.
ARTÍCULOS PERDIDOS- Objetos perdidos y fundadores perdidos se llevan a cabo durante 30 días.

BICICLETAS

Nuestros autobuses de tránsito están equipados con bastidores de bicicletas. Union Gap Transit asume ninguna responsabilidad por daños o robo cuando se utiliza bastidores de bicicletas. Usa los bastidores de bicicletas a su propio riesgo y controlar su bicicleta cuando está en los bastidores. Por favor, siga las instrucciones portabicietas cuando se carga / descarga.

CARGAR LA BICICLETA

1. Ponga hacia arriba para liberar el brazo y permitir que caiga abajo lentamente.
2. Levante la bicicleta sobre la rejilla poniendo en bicicleta en el interior de la ranura por primera vez.
3. Levante el brazo de soporte sobre la parte superior del neumático delantero y de liberación para encajar en fabricar neumáticos brazo de soporte seguro está descansando en el neumático no metálica.

DESCARGA DE SU BICICLETA - (informar controlador que necesita para descargar bicicleta)

1. Levantar el brazo de la llanta y la deje caer hacia abajo lentamente.
2. Levante la bicicleta fuera del bastidor.
3. Si no hay otra bicicleta en el estante, el estante veces por elevándolo a la posición vertical.

REGLAS PARA VIAJAR-

- Se requieren camisas y zapatos
- La ley estatal prohíbe fumar en el autobús
- Tome asiento rápidamente y permanecer sentado mientras el autobús está en movimiento
- La ley requiere el uso de cinturones de seguridad
- No se permite comer, beber o escuchar música de entrada / salida de auriculares w
- Mantenga los pies y el equipaje de mano, incluyendo sillas de paseo fuera de los pasillos
- Animales no disponen del servicio deben estar en jaulas
- Los niños menores de 6 años deben estar acompañados por un adulto o un niño mayor
- No hay malas palabras o comportamiento grosero permitido en el autobús
- Las bicicletas deben estar en bastidores de bicicletas. No hay patines
- Los primeros asientos están reservados para los ancianos y los corredores con necesidades especiales de movilidad. Por favor, renunciar a esos asientos cuando se le solicite.
- Por favor, deje saber al conductor antes de que se quiera bajar del autobús, y después de salir, esperar a que el autobús para salir antes de cruzar la calle.
- Las paradas de bandera sólo se producirán cuando el conductor considere que es seguro hacerlo.

UNION GAP DIAL-A-RIDE- Este programa es una gran manera para que los residentes de Union Gap con discapacidades mentales o físicas, daño temporal o enfermedades de viajar cuando sea necesario dentro de las ciudades y Union Gap, Selah, y Yakima. Con el fin de ser elegibles para montar Dial-A-Ride cada solicitante debe completar y presentar una solicitud que incluye una evaluación médica de su discapacidad, lesión o enfermedad temporal. Para una aplicación llame a 574-8000.