

Recycling Made Easy!

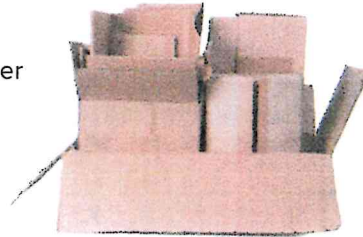
- **No need to sort!** Our single stream recycling service means all accepted recyclables can be put together in your recycling bins.
- Place your bins at the curb on a designated recycling collection day (see calendar on reverse).
- Place bins approximately three feet from your garbage cart. **All done!**



✓ ACCEPTED RECYCLABLES

PAPER:

- ✓ Newspaper
- ✓ Magazines & catalogs
- ✓ Direct mail & brochures
- ✓ Copier & printer paper
- ✓ File folders & note paper
- ✓ Corrugated cardboard
- ✓ Cereal, cracker, shoe boxes (chipboard)



METAL:

- ✓ Steel (tin) cans
- ✓ Aluminum cans



PLASTIC:

- ✓ #1 PET & #2 HDPE bottles (see mark on bottom of bottle)
- ✓ Soda bottles
- ✓ Water bottles
- ✓ Milk jugs
- ✓ Juice bottles/jugs
- ✓ Detergent & cleaning solution bottles



⊗ ITEMS NOT ACCEPTED

Any item not listed above, including:

- ⊗ Glass of any type
- ⊗ Paper milk or juice cartons
- ⊗ #3-#7 plastics (see mark on bottom of bottle)
- ⊗ Motor oil bottles
- ⊗ Anti-freeze bottles/jugs
- ⊗ Paint or aerosol cans
- ⊗ Plastic bags or plastic films of any kind
- ⊗ Flower pots
- ⊗ Yard waste (leaves, sticks, grass clippings, etc.)
- ⊗ Aseptic packaging
- ⊗ Shredded paper
- ⊗ Hazardous waste
- ⊗ Medical waste
- ⊗ Diapers
- ⊗ Fabric/textiles
- ⊗ Wood
- ⊗ Batteries
- ⊗ Light bulbs/tubes
- ⊗ Appliances
- ⊗ E-waste (computers, cell phones, TVs, electronics)
- ⊗ Wire, rope, chain, garden hoses, Christmas lights
- ⊗ Trash (put garbage in garbage bin)



BASIN
disposal
of YAKIMA