

**LIBRARY & COMMUNITY CENTER
CITY of UNION GAP**

BORArchitecture, pllc.
1320 North 16th Avenue, Suite C
Yakima, Washington 98902
(509) 454-3299

NOTICE TO BIDDERS:

To the Prime Bidders and all "Plan Holders of Record":

You are hereby notified of the following additions, deletions, modifications or clarifications to the drawings and specifications for the above-referenced project. This Addendum forms a part of the Contract Documents and shall be bound inside the front cover of the Construction Specifications Book.

BE SURE TO ACKNOWLEDGE THIS ADDENDUM ON YOUR BID / PROPOSAL FORM

The following information is to be issued to all Plan Holders of Record. However, prior to the Bid Opening, it is the specific responsibility of each general and separate contractor to notify his sub-contractors, suppliers, etc., and to verify with them all items covered by the Contract Documents, including Addenda, as relating to their Bids.

CONSTRUCTION SPECIFICATIONS

INDEX

- A. Page 4, line 34; Revise 237423.16 Packaged Direct Fired Outdoor Makeup Air Units, previously issued in Addendum No. 1, to read as follows:

237423.13 Packaged Direct-Fired Outdoor Makeup-Air Units

CONSTRUCTION DRAWINGS

SHEET A201 – EXERIOR ELEVATIONS

- A. KEYNOTE LEGEND; Revise keynote 072423.PCP to read as follows:

072423.PCP **PORTLAND CEMENT BOARD AND PLASTER FINISH SYSTEM**

SHEET A321 – WALL SECTIONS

- A. KEYNOTE LEGEND; Revise keynote 072423.PCP to read as follows:

072423.PCP **PORTLAND CEMENT BOARD AND PLASTER FINISH SYSTEM**

SHEET A322 – WALL SECTIONS

- A. KEYNOTE LEGEND; Revise keynote 072423.PCP to read as follows:

072423.PCP **PORTLAND CEMENT BOARD AND PLASTER FINISH SYSTEM**

SHEET A323 – WALL SECTIONS

- A. KEYNOTE LEGEND; Revise keynote 072423.PCP to read as follows:

072423.PCP **PORTLAND CEMENT BOARD AND PLASTER FINISH SYSTEM**

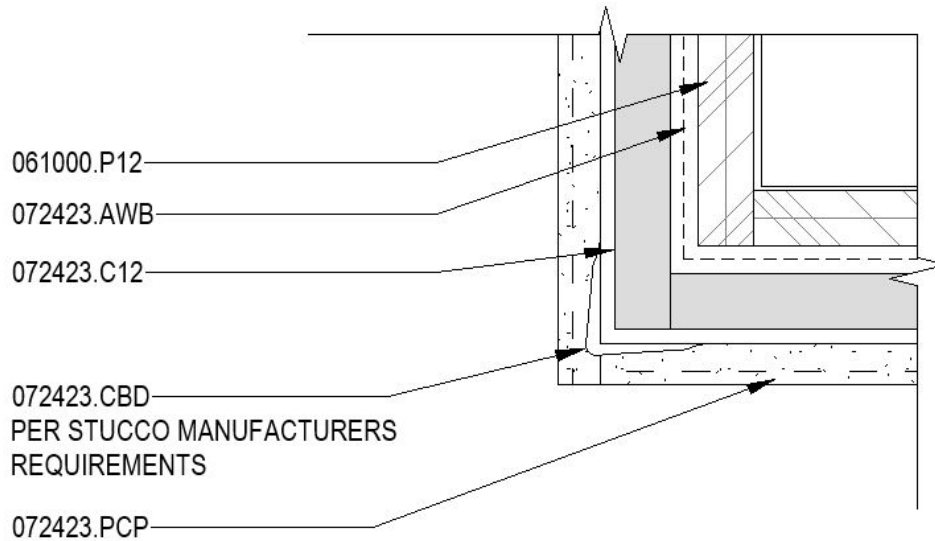
**LIBRARY & COMMUNITY CENTER
CITY of UNION GAP**

SHEET A401 – EXTERIOR DETAILS

A. KEYNOTE LEGEND; **Revise** keynote 072423.PCP to read as follows:

072423.PCP **PORTLAND CEMENT BOARD AND PLASTER FINISH SYSTEM**

B. Detail H9 EXTERIOR CORNER – STUCCO; **Revise** the arrow from keynote 072423.AWB to point at the dashed line between the 1/2" plywood sheathing and the 1/2" exterior cement board and **Add** the note **PER STUCCO MANUFACTURERS REQUIREMENTS** below keynote 072423.CBD as shown below:



SHEET A402 – EXTERIOR DETAILS

A. KEYNOTE LEGEND; **Revise** keynote 072423.PCP to read as follows:

072423.PCP **PORTLAND CEMENT BOARD AND PLASTER FINISH SYSTEM**

SHEET A403 – EXTERIOR DETAILS

A. KEYNOTE LEGEND; **Revise** keynote 072423.PCP to read as follows:

072423.PCP **PORTLAND CEMENT BOARD AND PLASTER FINISH SYSTEM**

SHEET A801 – CURTAIN WALL TYPES AND DETAILS

A. KEYNOTE LEGEND; **Revise** keynote 072423.PCP to read as follows:

072423.PCP **PORTLAND CEMENT BOARD AND PLASTER FINISH SYSTEM**

SHEET A802 – STOREFRONT AND RELITE TYPES, DTLs

A. KEYNOTE LEGEND; **Revise** keynote 072423.PCP to read as follows:

072423.PCP **PORTLAND CEMENT BOARD AND PLASTER FINISH SYSTEM**

**LIBRARY & COMMUNITY CENTER
CITY of UNION GAP**

SHEET A803 – DOOR AND FRAME TYPES AND SCHEDULES

A. KEYNOTE LEGEND; **Revise** keynote 072423.PCP to read as follows:

072423.PCP **PORTLAND CEMENT BOARD AND PLASTER FINISH SYSTEM**

B. DOOR SCHEDULE; **Revise** Door 107D material and finish call outs to read as follows:

MTRL – **HM**

FIN - **PT**

C. DOOR SCHEDULE; **Add** the following note in the REMARK column of Doors; 103, 105, 107, 107B, 108B and 109:

PROVIDE FUTURE HARDWARE RACEWAY

SHEET E110 – LIGHTING FIXTURE SCHEDULE

A. Type S3 Lighting fixture: **Revise** the type S3 lighting fixture to have **BLACK TRIM** in lieu of WHITE TRIM.

B. Type Z Lighting fixture: **Revise** the type Z lighting fixture to be **BLACK** in color in lieu of TITANIUM.

APPROVED SUBSTITUTIONS

The following items shall be added to the approved list of manufacturers at this time. This approval is an approval of quality only and is subject to compliance with specified technical requirements unless indicated otherwise. No attempt has been made to check each item of equipment as to the special feature, capacities or physical dimensions specifically required for this project. It is the responsibility of the supplier and the Contractor to check all requirements before submitting for approval. Final approval of exact equipment size, capacity, etc., will be determined when the successful Contractor submits for construction.

SECTION	ITEM	APPROVED
074100	Preformed Metal Roofing	The Bryer Company; TBC-Flush, Weathered Zinc
074100	Preformed Metal Soffits	The Bryer Company, TBC-Ultra, Weathered Zinc
095110	Acoustical Panel Ceilings	ACP-3 – Rockfon Education Standard 41301
099860	Sanitary Wall Finish	Nudo – FiberLite
264000	Lighting Fixtures	
	Type	Manufacturer
		Catalog Number
	A1	HE Williams
	A2	HE Williams
	A3	HE Williams
	B1	HE Williams
	EXIT	Evenlite
	F	HE Williams
	F2	DALS
	GG	B-K Lighting
	HH	B-K Lighting
	GX	Lumenwerx
		AT1-14-L50/835-D-L40-DIM-UNV
		AT1-24-L55/835-D-L42-DIM-UNV
		AT1-22-L40/835-D-L35-DIM-UNV
		75R-4-L50/835-L35-ACF-X-DIM-UNV
		RZR3-EM-G-U-BA-X-SD
		4DR-TL-L15/835-SCAXX-DIM-UNV-OW-OF-CS-N-F1
		GMB4-CC-35K-WH
		TY2-LED-X51-WW-XX-D57
		TY2-LED-X44-WW-XX-D34
		V3SEALR-D-WET-EPDO-SW-80-500-35-X-UNV-D1-1C-DTR-W

ADDENDUM NO. 2

**April 15, 2021
Page 4**

**LIBRARY & COMMUNITY CENTER
CITY of UNION GAP**

H	Lumenwerx	VIA2WDI-HLO-ARO-LED-80-350-375-35-XX-UNV-D1-1-DMB-W
S3/S3-2	Lumenwerx	VIA3R-HLO-FH-LED-80-600-35-XFT-UNV-D1-1-TB15-CF#(BLACK)
264500	Lighting Controls	Leviton GreenMAX Lighting Controls

ATTACHMENTS

None

END OF ADDENDUM NO. 2